



94FL-10" PLATE-

94F-9" PLATE-

94G-7" PLATE-

94E-5" SAUCER-



94H-SALT & PEPPER-



94M-16 OZ. MUG-



94XL-20 OZ. BOWL-



94B-SUGAR WITH LID-



94A-8 OZ. CREAMER-



94C-5 OZ. CUP-



94X-14 OZ. CEREAL-



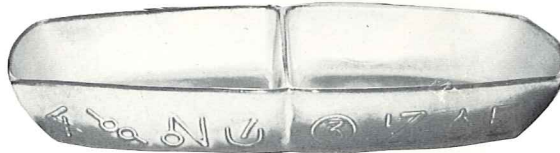
94V-2 QT. BAKER-



94L-12 OZ. TUMBLER-



94XO-6 OZ. DESSERT-



94QD-13" DIVIDED BOWL-



94Q-13" PLATTER-



94N-1 QT. VEGETABLE BOWL-



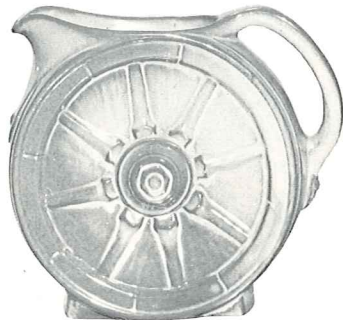
94W-3 QT. BAKER-



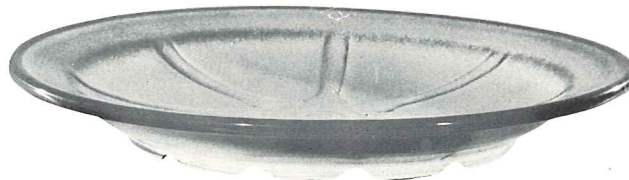
94P-17" PLATTER-



94J-2 CUP TEAPOT-



94D-2 QT. PITCHER-



94FC-15" CHOP PLATE-



94T-6 CUP TEAPOT-